

## Exploration That Delivers.

### Why Thunder Gold?

- 

**Demonstrated Tier One Discovery Potential**  
 Scale and grade aligned with Canada's largest open-pit gold mines.
- 

**Strategic Location & Infrastructure**  
 Only 40 km from Thunder Bay with year-round access to highway, rail, hydro, port, and skilled labour.
- 

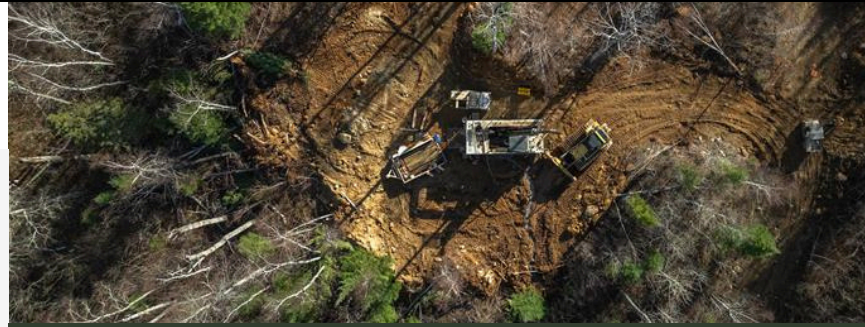
**Large-Scale Resource Potential**  
 Upper Expression of Intrusion Related Gold Deposit = Generational Scale with exceptional grade consistency.
- 

**Capital Efficiency**

  - \$0.66 / \$1.00 raised goes to exploration.
  - Average all-in drilling cost ~\$275/m.
  - All-in Discovery Cost \$3.95/oz
- 

**Significant Exploration Upside**  
 Short-term discovery potential within and adjacent to 2026 resource pit. Long-term potential at depth & within the 7,000-metre alteration halo currently untested.
- 

**Experienced Team**  
 Proven management capability. Consistently delivering on guidance.



### TOWER MOUNTAIN MRE HIGHLIGHTS

**514,000oz**

Indicated Resource  
 34.5 Mt @ 0.46 g/t

**3,053,000 oz**

Inferred Resource 211.1  
 Mt @ 0.45 g/t

**1:8:1**

Waste to Ore Strip  
 Ratio

**US\$3,000**

Gold price

**US\$17.00**

Operating costs

**C\$3.95**

All in Discovery Cost  
 per Au oz

### Consistent Mineralization

Gold mineralization proven across multiple rock types and settings

### → Rich Drilling History

7,625 hectares | 200+ holes | 47,000+ metres drilled since 2020 acquisition

### Management & Capital Structure

#### Wes C. Hanson, P.Geo

CEO & President

40+ year's experience in mining and mineral exploration across Canada, U.S., Latin America.

#### David Speck

CFO & Corporate Secretary

35+ years in finance, corporate development, and capital markets.

Issued & Outstanding	307 M
Options*	25 M
Warrants**	91.7 M
Fully Diluted	424.1 M
Market Capitalization (C\$)	\$38.4 M

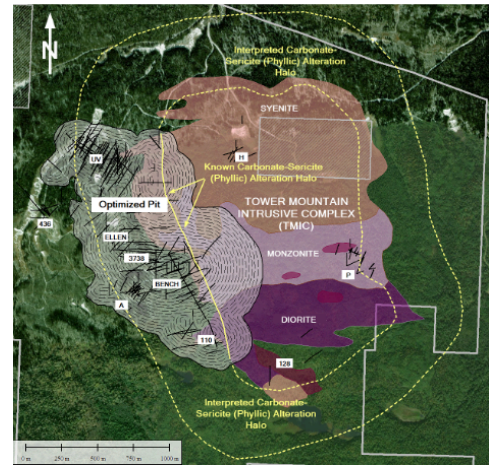
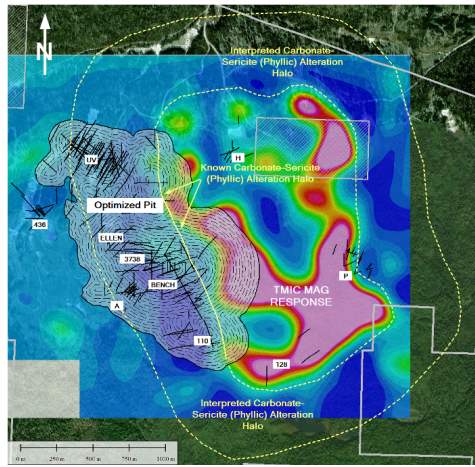
As at May 1, 2026 \$0.105 \*(\$0.05 - \$0.15 strike price) \*\* (\$0.10 - \$0.15 strike price)

## Multiple Opportunities for Resource Growth

25% of optimized pit is unknown due to gaps in drill coverage.

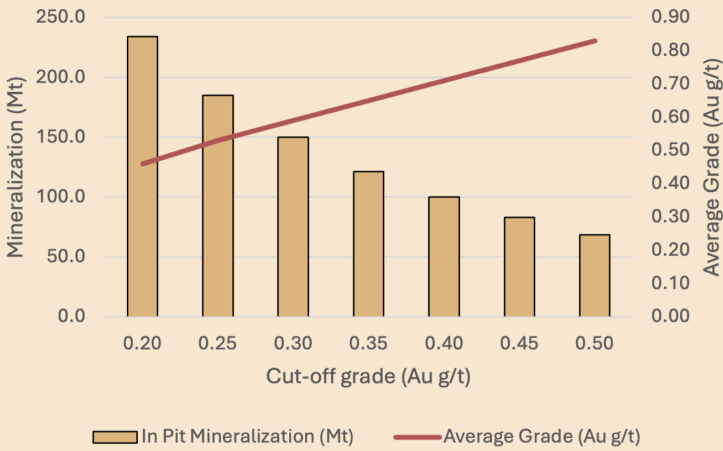
Discovery potential adjacent to and below optimized pit.

Long-term resource growth from remaining 80% (7,000 m) of alteration halo and depth extension of system.



## Tower Mountain MRE In Pit resource Sensitivity

### IN PIT RESOURCE SENSITIVITY



## MRE RESULTS - JANUARY 2026



**514,000 oz Au**

Indicated Resource 34.5 Mt @ 0.46 g/t



**3,053,000 oz Au**

Inferred Resource 211.1 Mt @ 0.45 g/t

**1.8.1**

Waste to Ore Strip Ratio

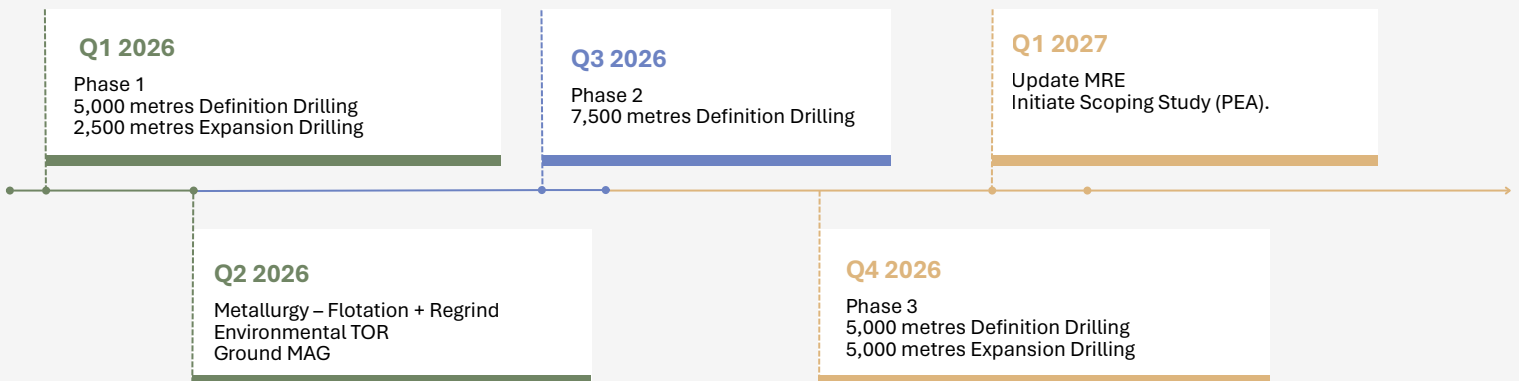
**US\$17.00**

Operating Costs

**US\$3,000**  
Gold price

**\$3.95**  
All in discovery cost

## Project Roadmap



Please see the Company's Website or SEDAR+ for Disclosures and Forward-looking Information.

**Investor Relations & Media**

ir@thundergoldcorp.com

