

Exploration That Delivers.

Why Thunder Gold?

- 

Demonstrated Tier One Discovery Potential
 Scale and grade aligned with Canada's largest open-pit gold mines.
- 

Strategic Location & Infrastructure
 Only 40 km from Thunder Bay with year-round access to highway, rail, hydro, port, and skilled labour.
- 

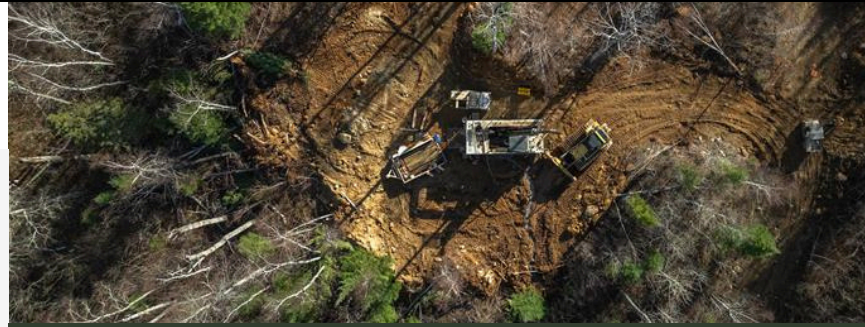
Large-Scale Resource Potential
 Upper Expression of Intrusion Related Gold Deposit = Generational Scale with exceptional grade consistency.
- 

Capital Efficiency

 - \$0.66 / \$1.00 raised goes to exploration.
 - Average all-in drilling cost ~\$275/m.
 - All-in Discovery Cost \$3.95/oz
- 

Significant Exploration Upside
 Short-term discovery potential within and adjacent to 2026 resource pit. Long-term potential at depth & within the 7,000-metre alteration halo currently untested.
- 

Experienced Team
 Proven management capability. Consistently delivering on guidance.



TOWER MOUNTAIN MRE HIGHLIGHTS

514,000oz

Indicated Resource
 34.5 Mt @ 0.46 g/t

3,053,000 oz

Inferred Resource 211.1
 Mt @ 0.45 g/t

1:8:1

Waste to Ore Strip
 Ratio

US\$3,000

Gold price

US\$17.00

Operating costs

C\$3.95

All in Discovery Cost
 per Au oz

Consistent Mineralization

Gold mineralization proven across multiple rock types and settings

Rich Drilling History

Over **6,700 hectares** | **200+** holes | **47,000+** metres drilled since 2020 acquisition

Management & Capital Structure

Wes C. Hanson, P.Geo

CEO & President

40+ year's experience in mining and mineral exploration across Canada, U.S., Latin America.

David Speck

CFO & Corporate Secretary

35+ years in finance, corporate development, and capital markets.

Issued & Outstanding	306 M
Options*	24 M
Warrants**	91.6 M
Fully Diluted	422.1 M
Market Capitalization (C\$)	\$33 M

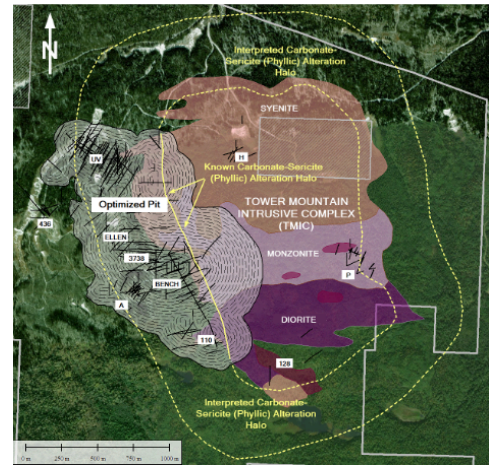
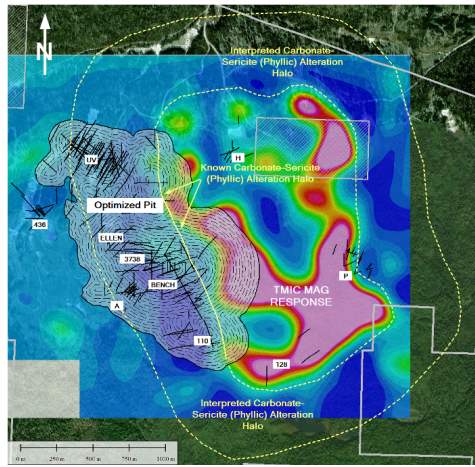
As at May 1, 2026 \$0.105 *(\$0.05 - \$0.15 strike price) ** (\$0.10 - \$0.15 strike price)

Multiple Opportunities for Resource Growth

25% of optimized pit is unknown due to gaps in drill coverage.

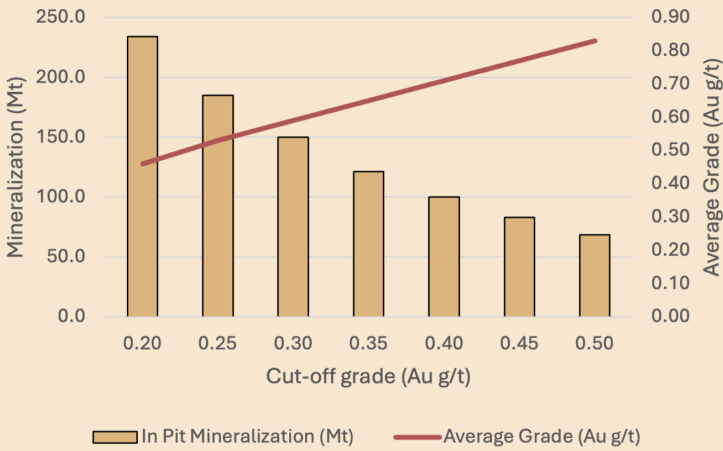
Discovery potential adjacent to and below optimized pit.

Long-term resource growth from remaining 80% (7,000 m) of alteration halo and depth extension of system.



Tower Mountain MRE In Pit resource Sensitivity

IN PIT RESOURCE SENSITIVITY



MRE RESULTS - JANUARY 2026



514,000 oz Au

Indicated Resource 34.5 Mt @ 0.46 g/t



3,053,000 oz Au

Inferred Resource 211.1 Mt @ 0.45 g/t

1.8.1

Waste to Ore Strip Ratio

US\$17.00

Operating Costs

US\$3,000

Gold price

\$3.95

All in discovery cost

Project Roadmap

Q1 2026

Phase 1
5,000 metres Definition Drilling
2,500 metres Expansion Drilling

Q3 2026

Phase 2
7,500 metres Definition Drilling

Q1 2027

Update MRE
Initiate Scoping Study (PEA).

Q2 2026

Metallurgy – Flotation + Regrind
Environmental TOR
Ground MAG

Q4 2026

Phase 3
5,000 metres Definition Drilling
5,000 metres Expansion Drilling

Please see the Company's Website or SEDAR+ for Disclosures and Forward-looking Information.

Investor Relations & Media

ir@thundergoldcorp.com

