


## Exploration That Delivers.

### Why Thunder Gold?

- 

**Demonstrated Tier One Discovery Potential**  
 Scale and grade aligned with Canada's largest open-pit gold mines.
- 

**Strategic Location & Infrastructure**  
 Only 40 km from Thunder Bay with year-round access to highway, rail, hydro, port, and skilled labour.
- 

**Large-Scale Resource Potential**  
 Upper Expression of Intrusion Related Gold Deposit = Generational Scale with exceptional grade consistency.
- 

**Capital Efficiency**

  - \$0.66 / \$1.00 raised goes to exploration.
  - Average all-in drilling cost ~\$275/m.
  - All-in Discovery Cost \$3.95/oz
- 

**Significant Exploration Upside**  
 Short-term discovery potential within and adjacent to 2026 resource pit. Long-term potential at depth & within the 7,000-metre alteration halo currently untested.
- 

**Experienced Team**  
 Proven management capability. Consistently delivering on guidance.



### TOWER MOUNTAIN MRE HIGHLIGHTS

**514,000oz**

Indicated Resource  
 34.5 Mt @ 0.46 g/t

**3,053,000 oz**

Inferred Resource 211.1  
 Mt @ 0.45 g/t

**1:8:1**

Waste to Ore Strip  
 Ratio

**US\$3,000**

Gold price

**US\$17.00**


Operating costs

**C\$3.95**

All in Discovery Cost  
 per Au oz

### Consistent Mineralization

Gold mineralization proven across multiple rock types and settings

 **Rich Drilling History** | Over **7,000 hectares** | **200+** holes | **47,000+** metres drilled since 2020 acquisition

### Management & Capital Structure

#### Wes C. Hanson, P.Geo

CEO & President

40+ year's experience in mining and mineral exploration across Canada, U.S., Latin America.

#### David Speck

CFO & Corporate Secretary

35+ years in finance, corporate development, and capital markets.

Issued & Outstanding	<b>305.7M</b>
Options*	<b>13.9M</b>
Warrants**	<b>91.7M</b>
Fully Diluted	<b>411.2M</b>
Market Capitalization (C\$)	<b>\$39M</b>

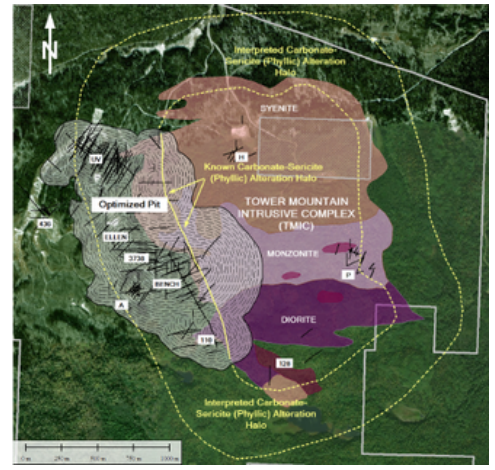
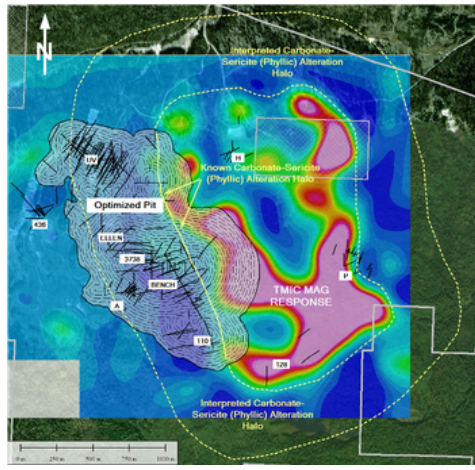
As at March 23, 2026. \*(\$0.05 - \$0.15 strike price) \*\* (\$0.10 strike price)

## Multiple Opportunities for Resource Growth

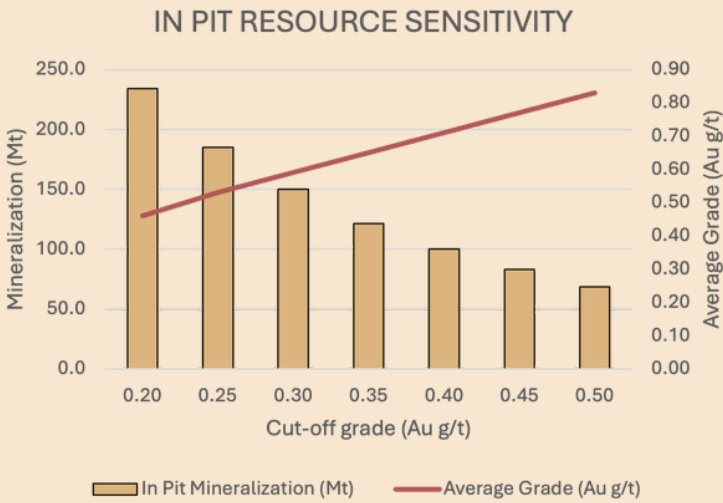
25% of optimized pit is unknown due to gaps in drill coverage.

Discovery potential adjacent to and below optimized pit.

Long-term resource growth from remaining 80% (7,000 m) of alteration halo and depth extension of system.



## Tower Mountain MRE In Pit resource Sensitivity



## MRE RESULTS - JANUARY 2026



**514,000 oz Au**

Indicated Resource 34.5 Mt @ 0.46 g/t

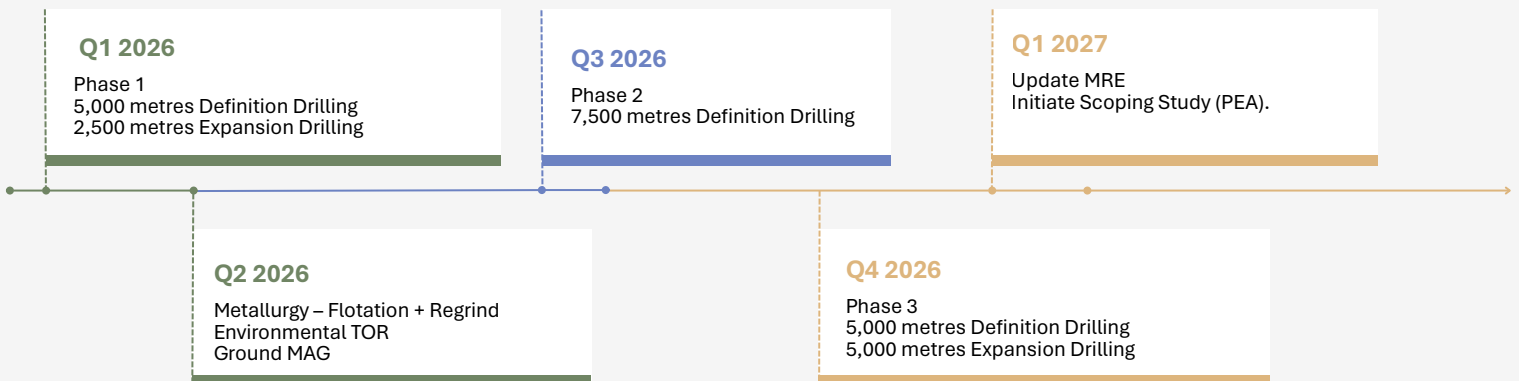


**3,053,000 oz Au**

Inferred Resource 211.1 Mt @ 0.45 g/t

<b>1.8.1</b> Waste to Ore Strip Ratio	<b>US\$17.00</b> Operating Costs
<b>US\$3,000</b> Gold price	<b>\$3.95</b> All in discovery cost

## Project Roadmap



Please see the Company's Website or SEDAR+ for Disclosures and Forward-looking Information.

**Investor Relations & Media**

ir@thundergoldcorp.com

