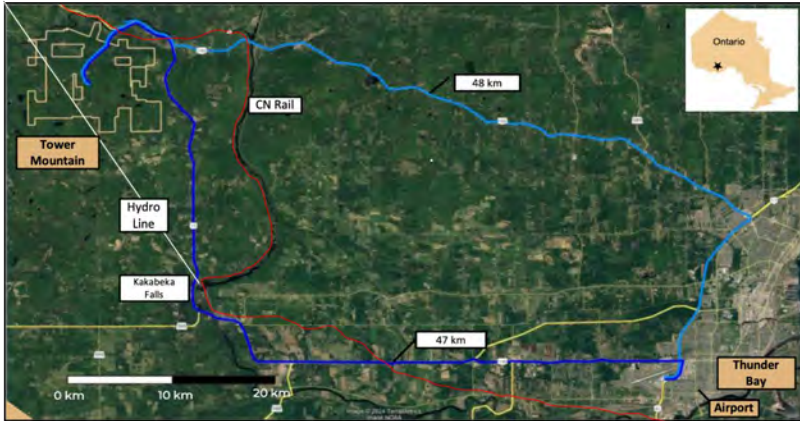


Tower Mountain Project – Shebandowan Greenstone Belt, Ontario, Canada



Tower Mountain – Acquired in 2020;
100% owned 2,500 hectares

< 50 km from Thunder Bay ON, pop. 100K;

- Great Lakes Seaport
- International Airport
- Mining Work Force

Tower Mountain Project is next to:

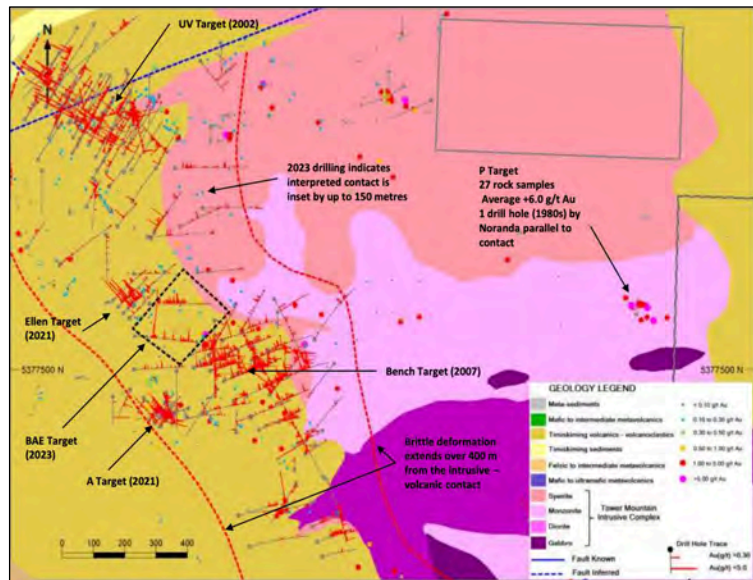
- National Railway
- Trans Canada Highway
- Hydro Electricity
- No water issues

Year-round drilling access

Ontario is a premium mining jurisdiction

Advanced Exploration Project – Tier One Discovery Potential

- Tower Mountain Intrusive Complex (“TMIC”) dominates the local geology (pink sections in image)
- **41,000 metres – approx. \$12M at current cost**
- Less than 40% of claim area is prospected
- Diamond drilling (1,800-metre-long x 500-metre-wide) only on western edge of TMIC to-date (drill locations shown in red on map)
- Over 6,000 metres around the north, east and south contacts of the TMIC is **NOT YET DRILL TESTED**
- Large-tonnage, low-grade, consistent gold system
- Canada’s two largest producing mines are ALSO large-tonnage, low-grade gold properties
- Gold mineralization occurs in **ALL** observed rock types at similar metal content – extremely predictable
- Mineralization starts from surface and extends beyond 600 metres at depth



Target	Hole ID	From	To	Interval	Au Uncut	Metal Factor
UV	TM 04 - 03	31.5	84.0	52.5	17.870	938
	TM 04 - 06	118.5	156.0	37.5	7.160	269
	TM 04 - 09	171.0	249.0	78.0	1.954	152
	TM 04 - 19	4.5	201.0	196.5	0.532	105
Bench	TM 04 - 31	3.7	250.5	246.8	0.575	142
	TM 21 - 120	186.5	341.0	154.5	0.811	125
	TM 22 - 135	140.0	176.0	36.0	1.130	41
	TM 22 - 135	197.0	224.0	27.0	0.693	19
Ellen	TM 21 - 94	10.0	92.5	82.5	1.746	144
	TM 21 - 100	23.0	113.0	90.0	1.233	111
A	TM 21 - 108	3.7	27.5	23.9	3.947	94
	TM 21 - 119	6.5	47.0	40.5	2.229	90
BAE	TM 23 - 137	104.5	141.5	41.5	35.140	1458
	TM 23 - 137	187.5	227.0	39.5	0.539	21
	TM 23 - 137	249.5	271.5	22.0	0.531	12
	TM 23 - 137	300.5	358.5	58.0	0.828	48
	TM 23 - 138	43.0	60.5	17.5	1.265	22
	TM 23 - 138	83.0	202.0	119.0	0.715	85

Presenting as a large-tonnage, low-grade (“LTLG”) gold property with a target of 10+ M oz. avg. ~1.0 g/t Au.

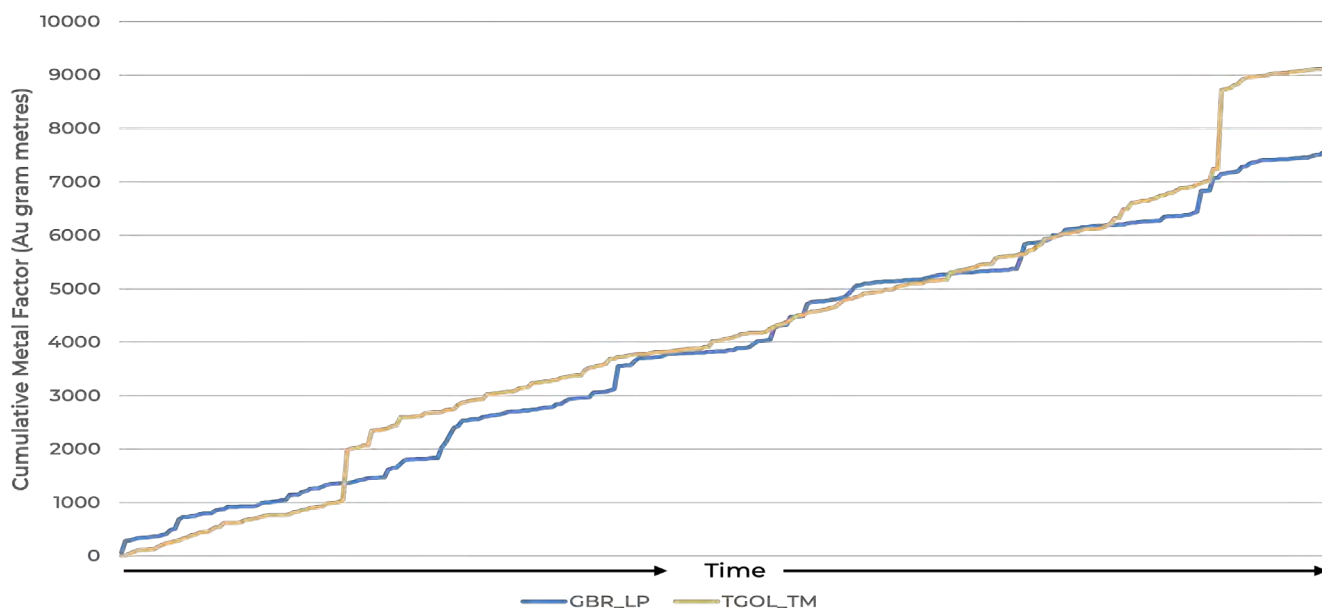
2023 drilling intersected **941.0 g/t Au / 1.5 m**, the highest grade intersected to date at Tower Mountain

Composite statistical analysis indicates a very uniform gold grade distribution throughout all observed rock types and areas of alteration. **“Predictability of gold-grade is a good thing!”**

5.0 metre composite data indicates 25% of drill core results average between 0.80 to 1.20 g/t Au (capped vs. uncapped).

The Opportunity

CUMULATIVE METAL FACTOR COMPARISON GREAT BEAR'S LP ZONE v. THUNDER GOLD'S TOWER MOUNTAIN



This chart is a “**Cumulative Metal Factor**” comparison. The Cumulative Metal Factor is the product of the gold grade (grams) multiplied by the length of the intercept (metres) and is measured in “gram-metres”. What it shows is that at each moment in time, during the “discovery phase of drilling” the metal factor at Tower Mountain is virtually the same as the metal factor at Great Bear’s LP Zone. It demonstrates that for the same amount of drilling, or at effectively the same level of exploration, Tower Mountain is just as prospective as Great Bear’s LP Zone, which was sold to Kinross for CDN\$1.8 Billion.

Metallurgy – High Recovery, Non-Acid Bearing

Preliminary metallurgy (2022) indicates robust gold recovery and non-acid generating mineralization;

No significant shearing or faulting identified to date – mineralization at Tower Mountain is interpreted to be Intrusion-Related, linked to the Tower Mountain Intrusive Complex.

Management and Capital Structure

Dr. Elliot Strashin	Chairman
Mr. Wes Hanson	CEO, President & Director
Mr. David Speck	CFO, Corporate Secretary
Dr. S. Jobin-Bevans	Director
Mr. Nigel Lees	Director
Mr. Warren Bates	Director

Shares Issued and Outstanding	206,634,151	(Insiders 20.5%)
Stock Options (\$0.05 - \$0.15)	14,315,000	
Warrants (\$0.06 - \$0.12)	45,047,038	
Fully Diluted Issued & Outstanding	265,996,189	

Treasury (Sep. 2024)	C\$ 1.5M
Monthly Burn Rate (Excluding drill programs)	C\$ 50K

2024 Objectives

Phase I Exploration: Reconnaissance mapping of eastern intrusive contact; evaluate technology opportunities including scanning, ore sorting, metallurgy.

Phase II Exploration: Targeting untested intrusive contacts north, east & south, 7,000-metre strike length, 200-400 metre section lines