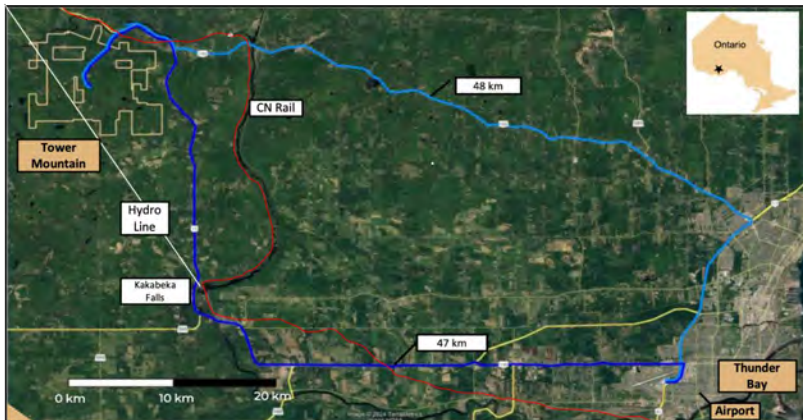


## Tower Mountain Project – Shebandowan Greenstone Belt, Ontario, Canada



**Tower Mountain, ~2,650 ha (100% ownership)**

**< 50 km from Thunder Bay ON, pop. 100K;**

- Great Lakes Seaport
- International Airport
- Mining Work Force

**< 3 km from Tower Mountain Project**

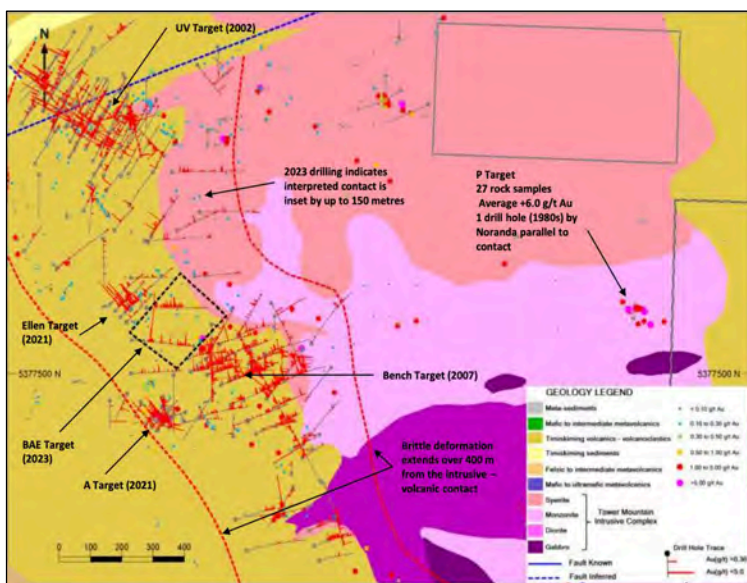
- National Railway
- Trans Canada Highway
- Hydro Electricity

**Year-round drilling access**

**Ontario is a premium mining jurisdiction**

## Advanced Exploration Project – Tier One Discovery Potential

- Tower Mountain Intrusive Complex (“TMIC”) dominates the local geology (pink sections in image)
- 190 diamond drill holes – 41,000 metres
- Less than 40% of claim area is prospected
- Diamond drilling to-date within 1,800-metre-long x 500-metre-wide corridor of brittle deformation parallel to western contact of the TMIC (drill locations in red)
- +6,000 metres of prospective contact around the TMIC is NOT YET TESTED by drilling
- TMIC is the ONLY significant outcropping calc-alkaline intrusion within a 25-km radius
- Low-grade gold occurs in intrusive rocks and brecciated volcanic rocks surrounding the TMIC
- Gold mineralization occurs in ALL observed rock types at similar metal content



Target	Hole ID	From	To	Interval	Au Uncut	MF
UV	TM04-03	31.50	84.00	52.50	17.870	938
	TM04-06	118.50	156.00	37.50	7.160	269
	TM04-09	171.00	249.00	78.00	1.954	152
	TM04-19	4.50	201.00	196.50	0.532	105
Bench	TM04-31	3.70	250.50	246.80	0.575	142
	TM21-120	186.5	341.0	154.5	0.811	125
	TM22-135	140.0	176.0	36.0	1.130	41
	TM22-135	197.0	224.0	27.0	0.693	19
Ellen	TM21-94	10.0	92.5	82.5	1.746	144
	TM21-100	23.0	113.0	90.0	1.233	111
A	TM21-108	3.7	27.5	23.9	3.947	94
	TM21-119	6.5	47.0	40.5	2.229	90
BAE	TM23-137	104.5	141.5	41.5	35.140	1458
	TM23-137	187.5	227.0	39.5	0.539	21
	TM23-137	249.5	271.5	22.0	0.531	12
	TM23-137	300.5	358.5	58.0	0.828	48
	TM23-138	43.0	60.5	17.5	1.265	22
	TM23-138	83.0	202.0	119.0	0.715	85

**Presenting as a large-tonnage, low-grade (“LTLG”) gold property with a target of 5-10 M oz. avg. ~1.0 g/t Au.**

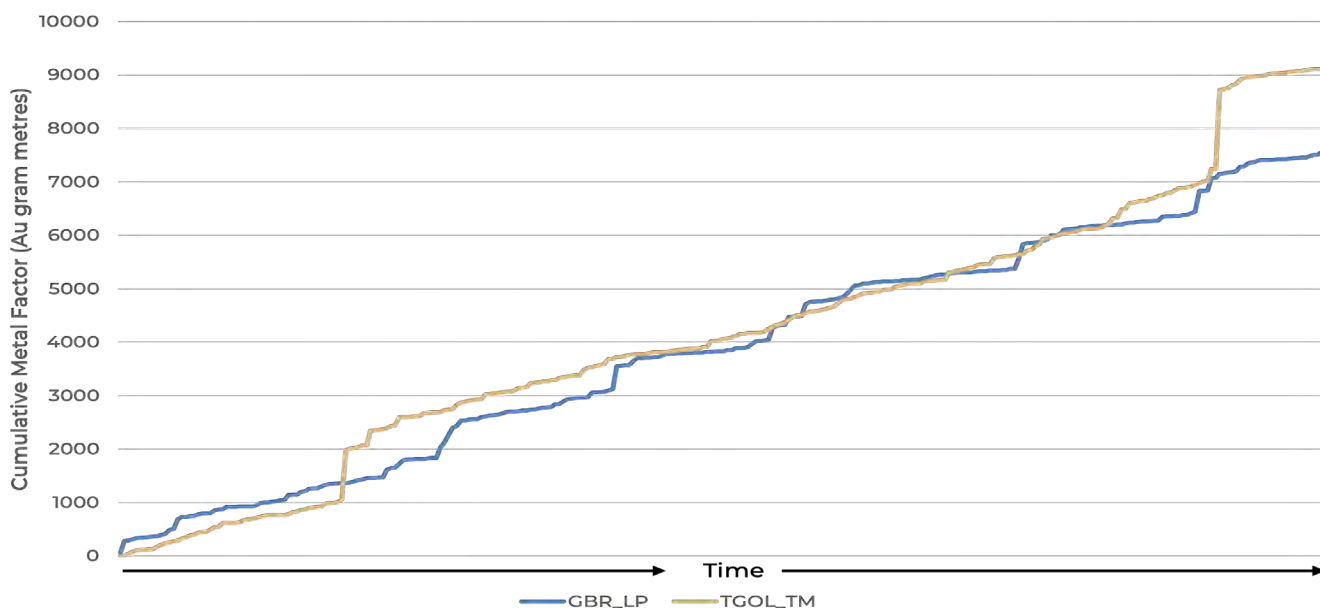
2023 drilling intersected **941.0 g/t Au / 1.5 m**, the highest grade intersected to date at Tower Mountain

Composite statistical analysis indicates a very uniform gold grade distribution throughout all observed rock types and areas of alteration. **“Predictability of gold-grade is a good thing!”**

5.0 metre composite data indicates 25% of drill core results average between 0.80 to 1.20 g/t Au (capped vs. uncapped).

## The Opportunity

**CUMULATIVE METAL FACTOR COMPARISON  
GREAT BEAR'S LP ZONE v. THUNDER GOLD'S TOWER MOUNTAIN**



This chart is a “**Cumulative Metal Factor**” comparison. The Cumulative Metal Factor is the product of the gold grade (grams) multiplied by the length of the intercept (metres) and is measured in “gram-metres”. What it shows is that at each moment in time, during the “discovery phase of drilling” the metal factor at Tower Mountain is virtually the same as the metal factor at Great Bear’s LP Zone. It demonstrates that for the same amount of drilling, or at effectively the same level of exploration, Tower Mountain is just as prospective as Great Bear’s LP Zone, which was sold to Kinross for CDN\$1.8 Billion.

## Metallurgy – High Recovery, Non-Acid Bearing

Preliminary metallurgy (2022) indicates robust gold recovery and non-acid generating mineralization;

No significant shearing or faulting identified to date – mineralization at Tower Mountain is interpreted to be Intrusion-Related, linked to the Tower Mountain Intrusive Complex.

## Management and Capital Structure

Dr. Elliot Strashin	Chairman
Mr. Wes Hanson	CEO, President & Director
Mr. David Speck	CFO, Corporate Secretary
Dr. S. Jobin-Bevans	Director
Mr. Nigel Lees	Director
Ms. Bonnie Lyn de Bartok	Director
Mr. Warren Bates	Director

Shares Issued and Outstanding	173,300,818	(Insiders 19.6%)
Stock Options (\$0.05 - \$0.15)	10,645,000	
Warrants (\$0.09 - \$0.18)	11,058,705	
Fully Diluted Issued & Outstanding	194,824,523	

Treasury (Mar. 2024)	C\$ 600K
Monthly Burn Rate	C\$ 50K

## 2024 Objectives

**Phase I Drilling:** C\$2 million financing: Est. 5,000 metres, targeting the eastern intrusive contact, 1,800-metre strike length, 200-metre section lines with 2 holes (500 metres long) per section, 100 – 200 metres from surface

**Phase II Drilling:** C\$5 million financing: Est. 10,000 metres, targeting northern and southern intrusive contact, 3,600-metre strike length, 200-metre section lines with 2 holes (500 metres long) per section, 100 – 200 metres from surface